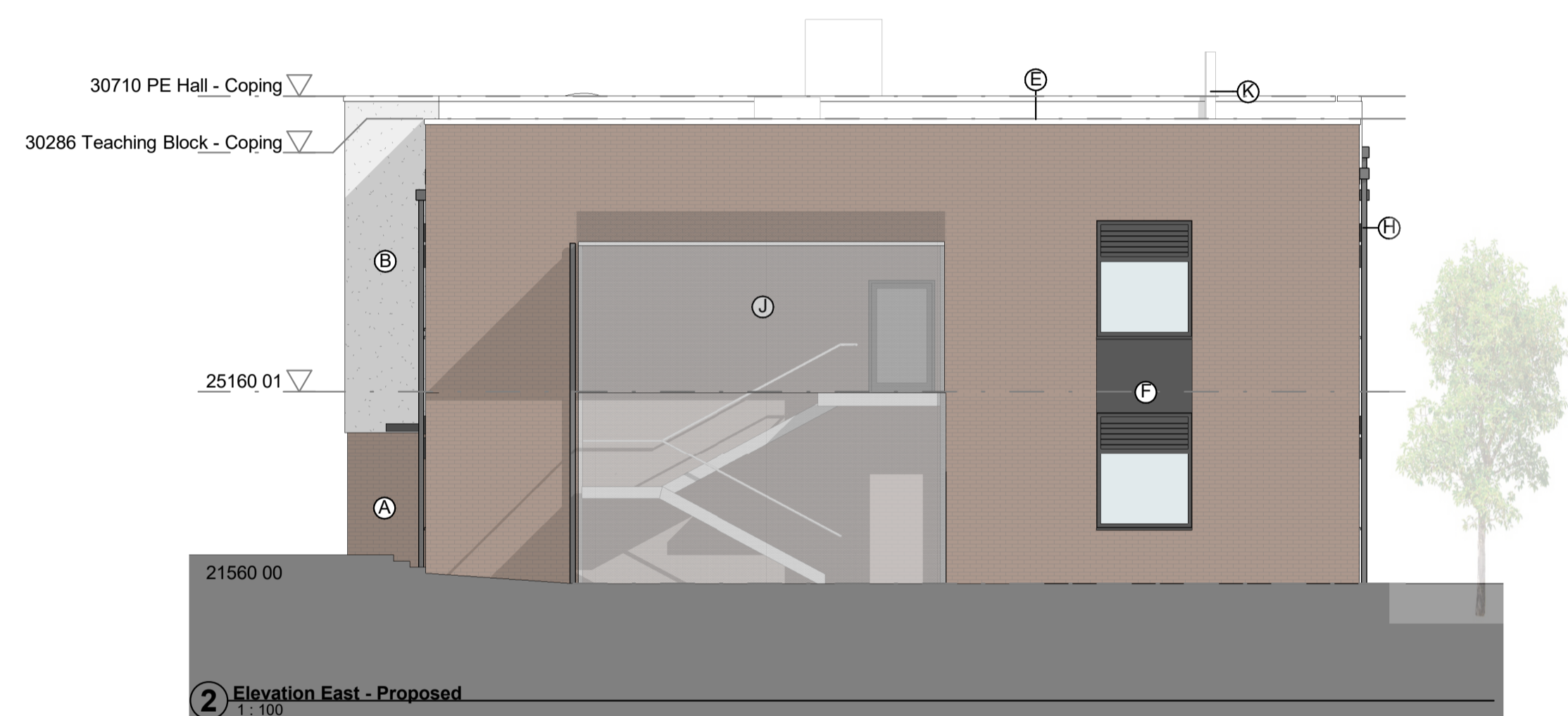
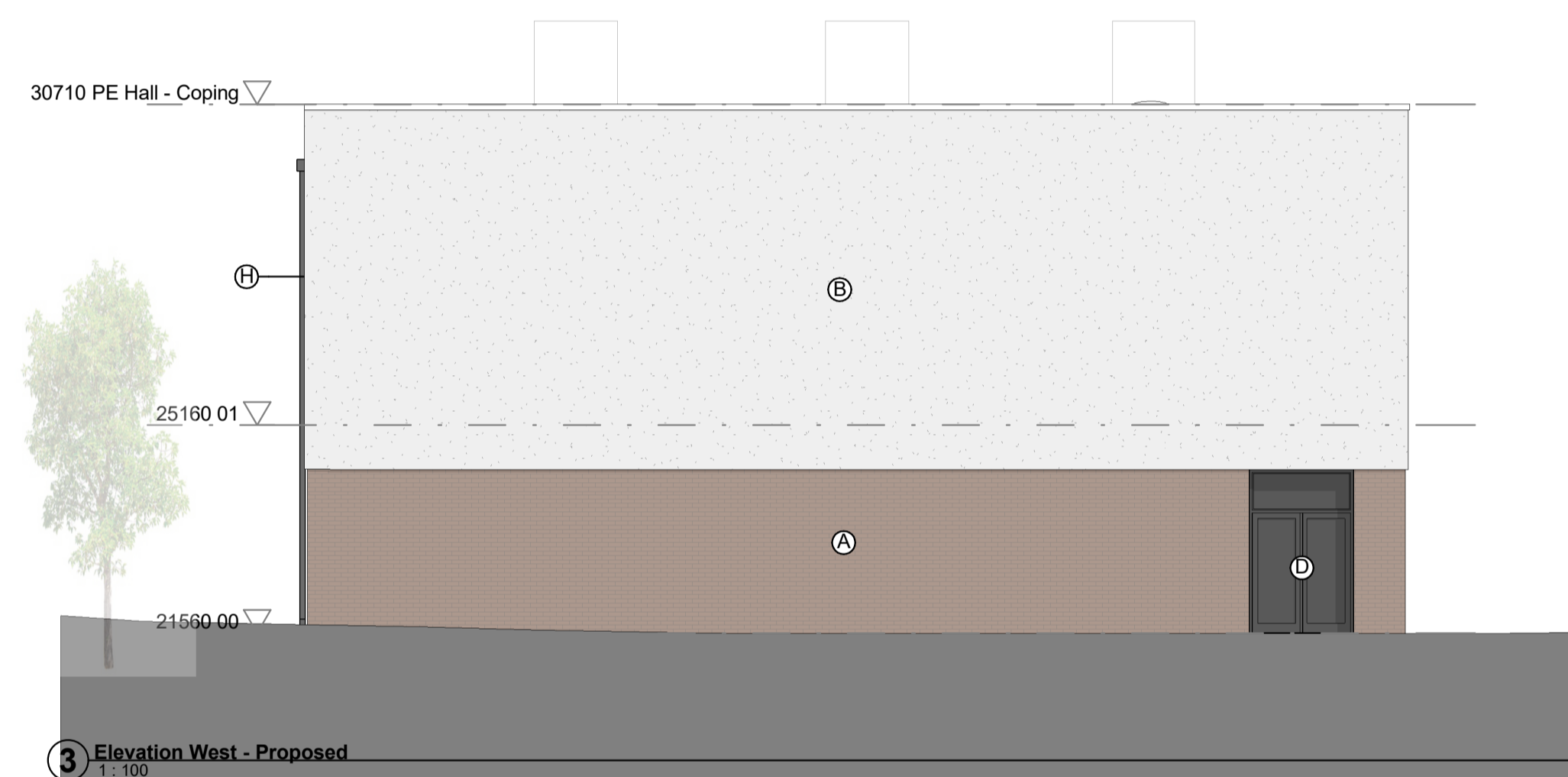


1 Elevation South - Proposed  
1:100



2 Elevation East - Proposed  
1:100



3 Elevation West - Proposed  
1:100



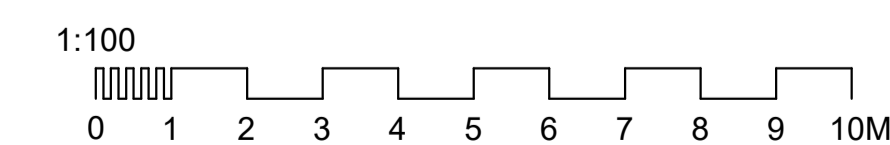
Bespoke Artwork Design  
Laser cut aluminium fretwork panel  
powder coated in 5 colours  
spacer fixed to elevation with 50mm  
offset fixings



4 Elevation North - Proposed  
1:100

ELEVATION KEY

- A Brick (F10/110)
- B Render (white) (M21/210)
- C Upvc windows with aluminium louvres/openable panels (grey) (L10/)
- D PPC aluminium doors (grey) (L20/)
- E Aluminium coping (grey)
- F Cladding (grey) (H20/150)
- G Aluminium glazed entrance door (L20/521)
- H Rainwater pipe (grey)
- J Galvanised steel stair enclosure (L30/251)
- K Flue
- L Aluminium powder coated artwork panels, offset fixed to elevation



PLEASE NOTE

FOR CONSTRUCTION PURPOSES USE ONLY FIGURED DIMENSIONS. THIS DRAWING MUST ALWAYS BE READ IN CONJUNCTION WITH ALL RELEVANT PROJECT DETAILS. ALL DIMENSIONS MUST BE CHECKED ON SITE PRIOR TO COMMENCEMENT. PLEASE REPORT ANY DISCREPANCY TO THE ARCHITECT OR CONTRACT ADMINISTRATOR

© COPYRIGHT HMY 2014

Revisions

| Rev | Date       | SL | Description                              |
|-----|------------|----|--|
| P09 | 2021.10.25 | SL | Artwork references removed               |
| P08 | 2021.09.30 | SL | Artwork added to North Elevation         |
| P07 | 2021.09.15 | SL | PE Hall Parapet level increased by 125mm |
| P06 | 2021.08.25 | SL | Planning amendment issue                 |
| P05 | 2021.08.21 | SL | STAGE 3 ISSUE                            |
| P04 | 2021.05.20 | SL | Layout updated for CEM9 Design Report    |
| P03 | 2021.03.10 | SL | STAGE 2 ISSUE                            |
| P02 | 2021.03.03 | SL | Layout updated for CEM5 Design Report    |
| P01 | 2021.02.24 | SL | FIRST ISSUE                              |

P10 2021.10.25 JG Artwork updated.

File Ref: BGS-HMY-Z1-XX-DR-A-3100

| Drawing                                 |                | Date       |
|---|----------------|------------|
| Proposed Elevations                     |                | Feb 21     |
| Project Client                          |                | Scale @ A1 |
| Borden Grammar School Expansion Project |                | 1:100      |
| Kier Construction Ltd                   |                |            |
| Job Reference                           | Drawing Number | Revision   |
| BGS                                     | 3100           | P12        |
| Purpose of Issue                        |                | Approval   |

Halle McCormack Young LLP Chartered Architects  
www.hmy.uk.com/ T 01892 515311

HMY